


4 Using Zelio Soft

Note: The following descriptions are illustrated with functional examples.

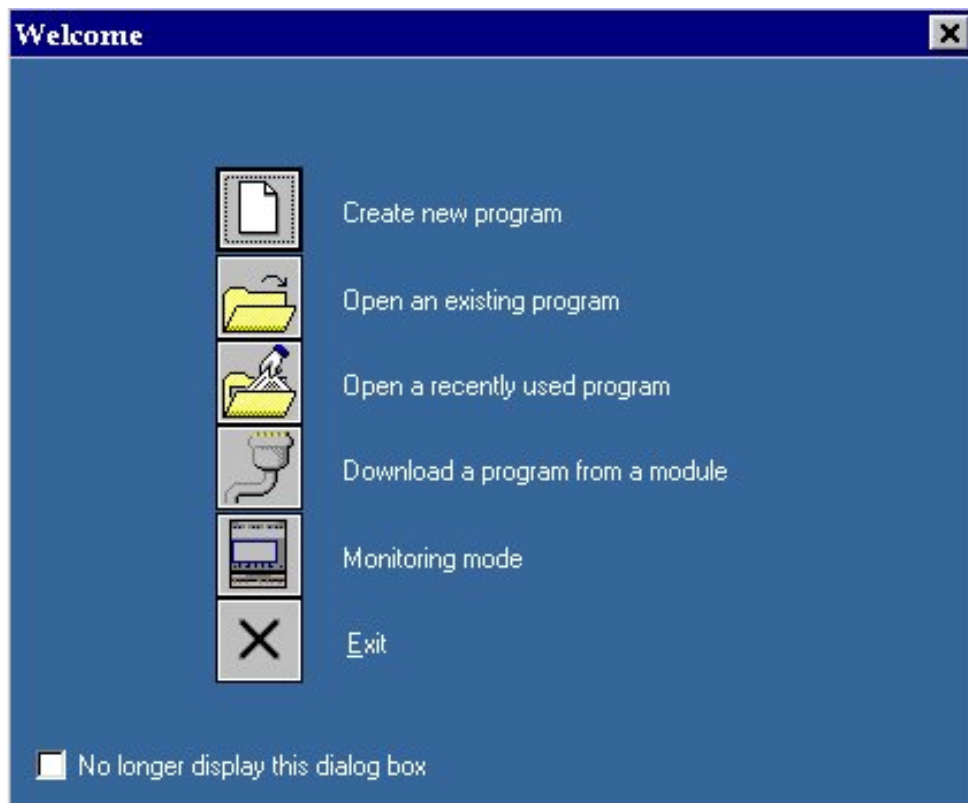
Click on the  icon to access the descriptions.

If Zelio Soft 2 software is installed, a click on the link will open the program. You may then select simulation mode **(1)** and start the module **(RUN) (2)**.



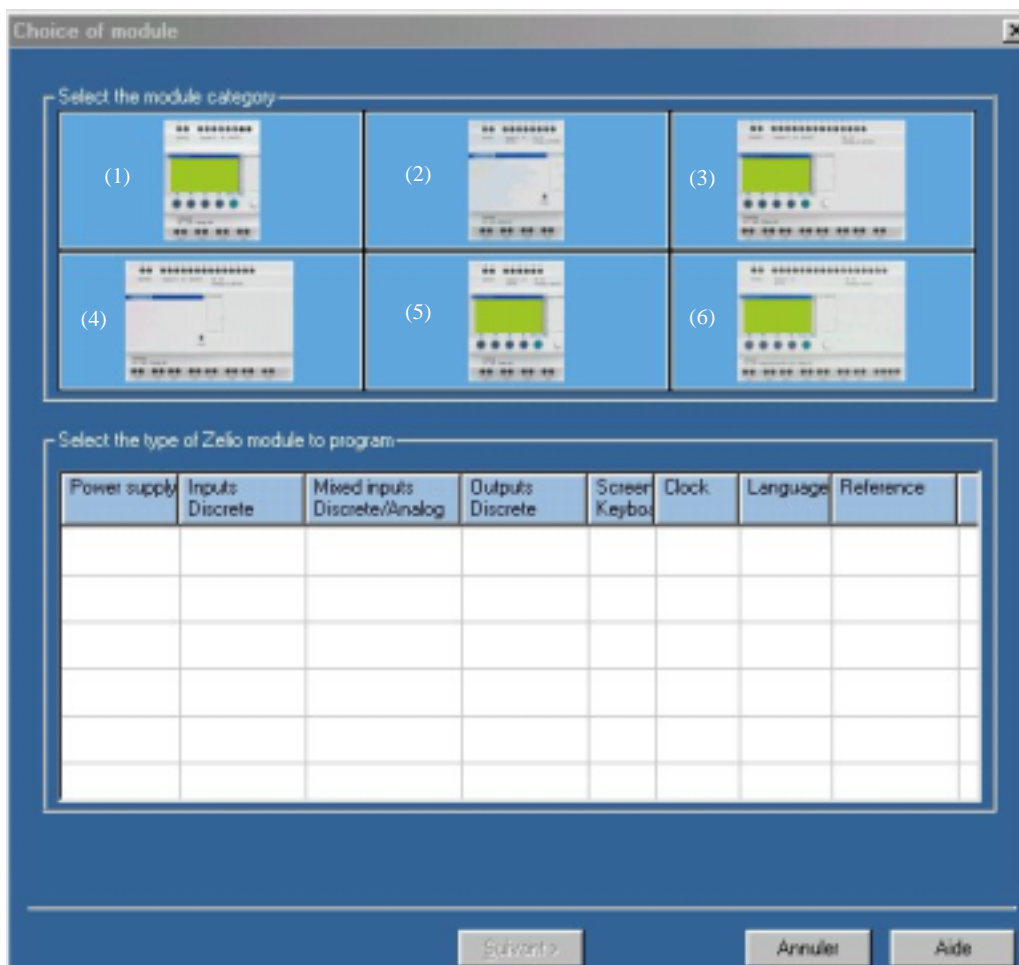
4.1 STARTING A PROGRAM

When the Zelio Soft program is launched, the following start-up window appears:



Click on **Create a new program** to start a program, or choose **New** in the **File** menu if the program has already been launched.

The smart relay option window now appears:

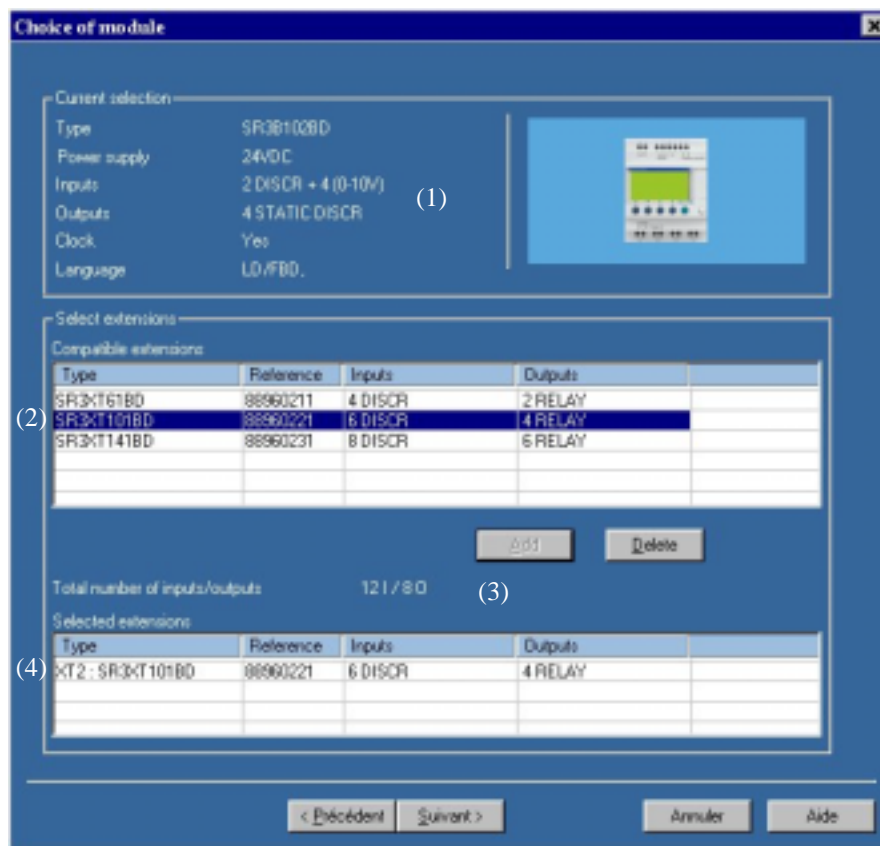


First select the desired module category :

- (1) 10/12_I/O_WITHOUT_EXTENSION
- (2) 10/12_I/O_WITHOUT_SCREEN_WITHOUT_EXTENSION
- (3) 20_I/O_WITHOUT_EXTENSION
- (4) 20_I/O_WITHOUT_SCREEN_WITHOUT_EXTENSION
- (5) 10_I/O_WITH_EXTENSIONS
- (6) 26_I/O_WITH_EXTENSIONS

Once you have selected the category (the category selected will appear in yellow), the corresponding module list appears below, click on the module type desired and click on **Next** or double-click directly on the module.

If you have chosen a module with extensions (line SR3), the following screen will appear (if you have chosen a non-extendable model, the programming type option screen will appear directly):



A summary of the characteristics of the module then appears in the upper left corner of the window (1). You may go back to the module choice by clicking on **Previous**. You may then add input/output extensions and/or a communication extension, available to you in list (2). Just double click on the extension desired, and the total number of input/outputs is updated to line (3). The selected extension is then visible at the bottom of window (4).

For example, if the **SR3B102BD** module is selected, 3 types of extensions are available on the following screen: **SR3XT61BD**, **SR3XT101BD**, **SR3XT141BD**. You may select the **SR3XT101BD** extension by double-clicking on it, then deleting it by double-clicking on selection line (4) and replacing it with extension **SR3XT61BD**.

Note 1: The Zelio Logic extendable models only accept one I/O extension at a time and/or a Modbus communication extension.

Note 2: The basic modules and associated extensions must have an identical power supply.

Then click on **Next**. The programming type option screen appears:

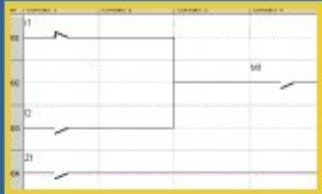
Choice of module

Current selection

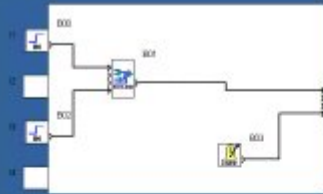
| | Base | Extensions |
|--------------|---------------------|----------------|
| Reference | SR3B102BD | 1 Not selected |
| Power supply | 24VDC | 2 SR3XT101BD |
| Inputs | 2 DISCR + 4 (0-10V) | |
| Outputs | 4 STATIC DISCR | |
| Clock | Yes | |
| Language | Ladder | |

Total number of inputs/outputs12 I / 8 O

Select the programming type



Ladder



FBD

< Précédent

Suivant >

Annuler

Aide

A summary of the current selection (module chosen + possible extensions) appears at the top of the screen. You may choose your programming type in the lower box. If you wish to program in Ladder language, choose **Ladder**, and if you wish to program with functional block diagrams, choose **FBD**.

Note 1: The previous version of Zelio Logic only allowed for Ladder programming, you now have the choice between two complementary languages.

Note 2: Certain smart relay models are programmable only in Ladder language, here are their reference numbers: SR2 A101BD, SR2 A101FU, SR2 A201BD, SR2 A201FU, SR2 D101BD, SR2 D101FU, SR2 D201BD, SR2 D201FU (if you select one of these models, this screen will not appear).

The following 2 sections separately introduce and train you in the 2 types of programming.